



flow & process solutions



Angle Type Strainers and Accessories



As one of the most important system components, AWH strainers protect plants and production machines from mechanical damage, keep undesirable particles away from your product and help to prevent production downtimes. AWH strainers are easy to install, have minimal space requirements, and can be used flexibly due to the large number of different filter inserts.

Technical Parameter

Material:	in contact with the product: 1.4301 (304) /1.4307 (304L), 1.4404 (316L) not in contact with the product: 1.4301 (304) /1.4307 (304L) strainer: 1.4404 (316L)
Surface:	inside: $R_a \leq 0.8 \mu\text{m}$ (strainer and welding seam higher) outside: electro polished
Sealing:	grooved ring, seal ring: EPDM (other materials on request)
Compressive strength:	nominal pressure DN25 - DN100: PN10 nominal pressure DN125 - DN150: PN6
Connections:	standard: welding ends DIN EN 10357 alternative: male ends DIN 11851/SMS alternative: liner ends DIN 11851 alternative: clamp ends DIN 32676 (other variants on request)

Features

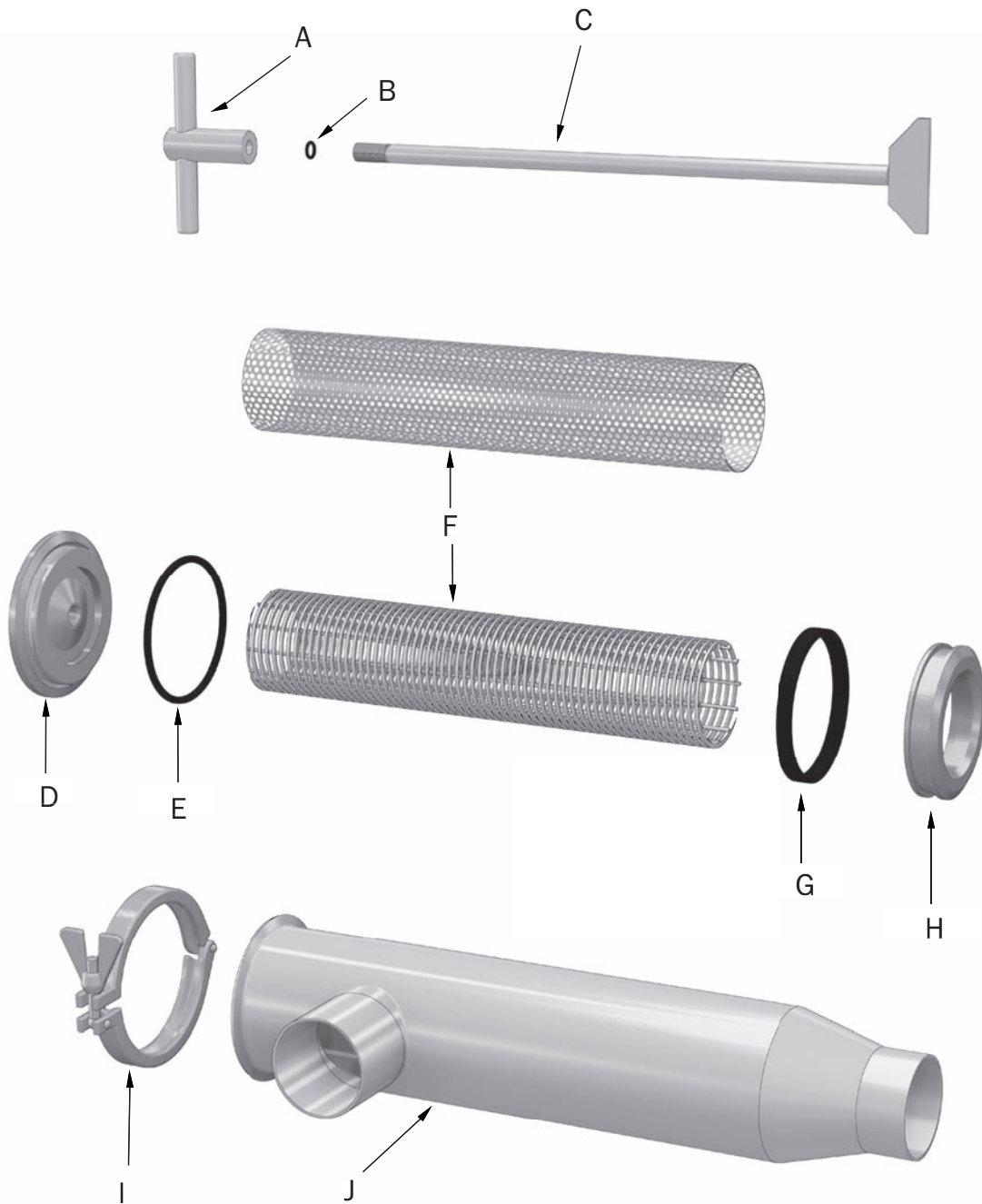
1. The gap width and perforation can be easily adjusted to specific requirements by replacing the strainer insert.
2. Thanks to the built-in heavy duty clamp, no tools are required for assembling and disassembling strainers with nominal diameters up to DN100. This makes replacing the strainer insert quick and easy. DN125 - DN150 feature a DIN 11851 grooved nut.
3. During disassembly of the strainer insert, the gap between the tube and the casing is automatically cleaned by the scraper ring. The slotted tube used has the same dimensions, but features a larger strainer area than conventional perforated sheets.
4. Direction of flow is from the outside to the inside.
5. Determination of the nominal pressure is made on the basis of fluids from Group 1 and for gases from Group 2.
6. Cost-effective production was another important factor in designing this product. Compare us to our competitors. Our prices will impress you.

Not all versions could be included in this catalogue.

Further strainer inserts are available.

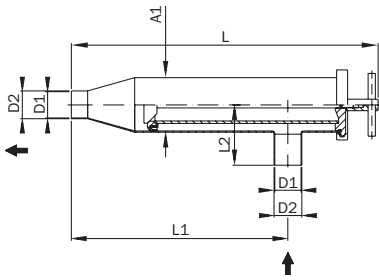
We will be happy to tailor our angle type strainer to meet your needs. For example, with heating.

Explosion View



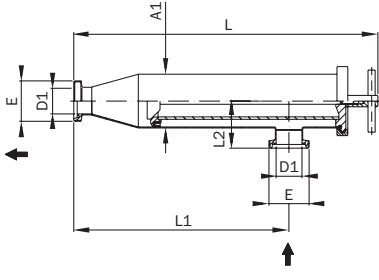
- | | |
|-------------------------|---------------------------|
| A Locking handle | F Strainer insert |
| B Seal ring | G Grooved ring |
| C Tie rod | H Scraper ring |
| D Cap | I Heavy duty clamp |
| E Seal ring | J Casing |

Angle Type Strainers and Accessories



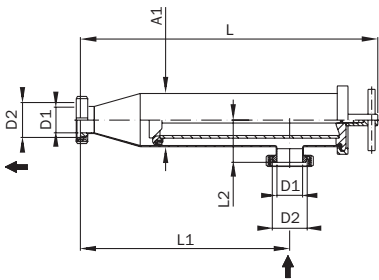
Angle Type Strainer Weld/Weld DIN

DN DIN	D1	D2	A1	L	L1	L2	Weight [kg]
25	26	29	70	554	406	82	3.3
32	32	35	70	549	401	77	3.2
40	38	41	70	534	386	85	3.2
50	50	53	104	585	413	115	5.0
65	66	70	104	558	386	113	5.2
80	81	85	154	771	563	150	12.2
100	100	104	154	726	517	167	12.8
125	125	129	204	923	650	160	25.2
150	150	154	204	923	650	165	24.4



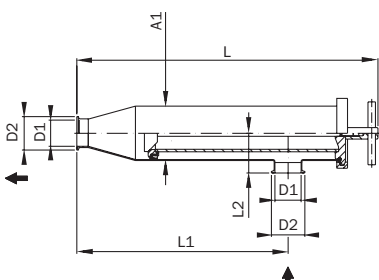
Angle Type Strainer Male/Male DIN

DN DIN	D1	A1	E	L	L1	L2	Weight [kg]
25	26	70	Rd 52 x 1/6"	561	413	67	3.4
32	32	70	Rd 58 x 1/6"	552	404	70	3.4
40	38	70	Rd 65 x 1/6"	543	395	70	3.5
50	50	104	Rd 78 x 1/6"	589	417	90	5.2
65	66	104	Rd 95 x 1/6"	565	393	95	5.4
80	81	154	Rd 110 x 1/4"	777	573	125	13.5
100	100	154	Rd 130 x 1/4"	750	546	134	13.6
125	125	204	Rd 160 x 1/4"	927	654	161	26.6
150	150	204	Rd 190 x 1/4"	931	658	160	27.9



Angle Type Strainer Liner/Liner DIN

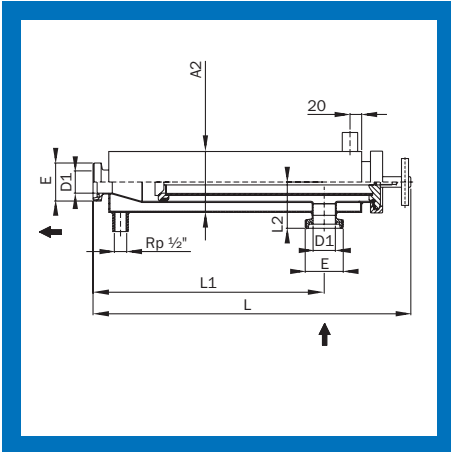
DN DIN	D1	D2	A1	L	L1	L2	Weight [kg]
25	26	44	70	554	406	60	3.7
32	32	50	70	545	397	63	3.8
40	38	56	70	536	388	64	3.9
50	50	68.5	104	582	410	83	6.1
65	66	86	104	557	385	87	6.8
80	81	100	154	772	565	114	14.6
100	100	121	154	745	536	124	15.3
125	125	150	204	915	642	149	29.1
150	150	176	204	918	645	152	31.0



Angle Type Strainer Clamp/Clamp DIN

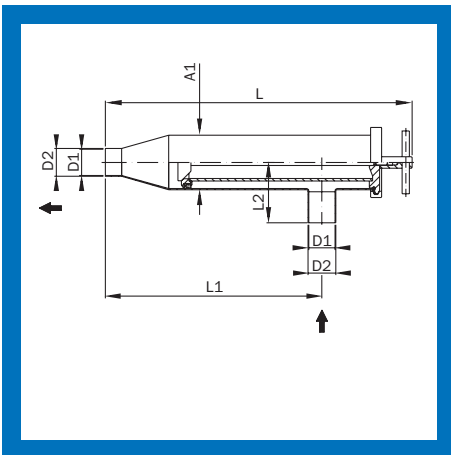
DN DIN	D1	D2	A1	L	L1	L2	Weight [kg]
25	26	50.5	70	554	406	60	3.3
32	32	50.5	70	542	394	60	3.3
40	38	50.5	70	532	384	60	3.3
50	50	64	104	576	404	76	5.4
65	66	91	104	553	381	83	5.6
80	81	106	154	760	556	108	12.9
100	100	119	154	724	520	108	12.7
125	125	155	204	909	636	143	25.6
150	150	183	204	909	636	143	26.0

Angle Type Strainers and Accessories



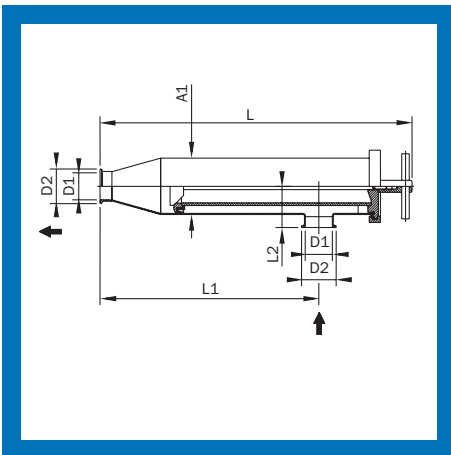
Angle Type Strainer heatable Male/Male DIN

DN DIN	D1	E	L	L1	L2	A2 - Heating jacket	Weight [kg]
25	26	Rd 52 x 1/6"	561	413	86	104 x 2	6.0
40	38	Rd 65 x 1/6"	543	395	79	104 x 2	6.2
50	50	Rd 78 x 1/6"	589	417	90	129 x 2	8.9
65	66	Rd 95 x 1/6"	565	393	95	129 x 2	9.1
80	81	Rd 110 x 1/4"	777	572	135	204 x 2	20.5
100	100	Rd 130 x 1/4"	755	546	154	204 x 2	20.2



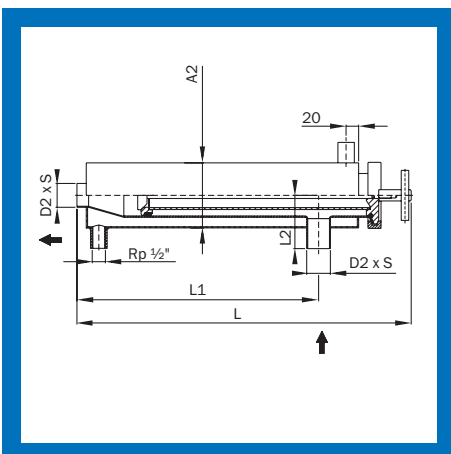
Angle Type Strainer Inch Weld/Weld

DN Inch	D1	D2	A1	L	L1	L2	Weight [kg]
1"	22.2	25.4	70	553	407	82	3.2
1 1/2"	34.9	38.1	70	535	388	85	3.3
2"	47.6	50.8	104	585	413	115	5.4
2 1/2"	60.3	63.5	104	558	387	115	5.4
3"	72.9	76.1	154	769	563	150	12.9
4"	97.6	101.6	154	724	515	167	12.8



Angle Type Strainer Clamp/Clamp Inch

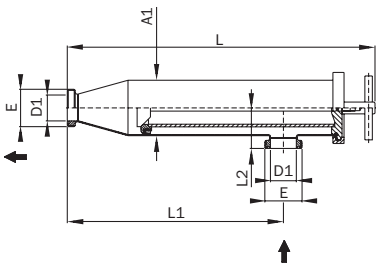
DN Inch	D1	D2	A1	L	L1	L2	Weight [kg]
1"	22.1	50.5	70	561	412	66	3.3
1 1/2"	34.8	50.5	70	545	398	66	3.3
2"	47.5	64	104	588	417	82	5.4
2 1/2"	60.2	77.5	104	553	395	83	5.4
3"	72.9	91	154	776	570	108	13.0
4"	97.4	119	154	732	526	108	12.9



Angle Type Strainer heatable Weld/Weld Inch

DN Inch	D2 x S	L	L1	L2	A2 - Heating jacket	Weight [kg]
1"	25.4 x 1.6	554	406	82	104 x 2	5.8
1 1/2"	38.1 x 1.6	534	389	85	104 x 2	5.8
2"	50.8 x 1.6	585	413	115	129 x 2	8.7
2 1/2"	63.5 x 1.6	558	389	113	129 x 2	8.9
3"	76.1 x 1.6	787	583	150	204 x 2	20.3
4"	101.1 x 2	750	546	167	204 x 2	20.1

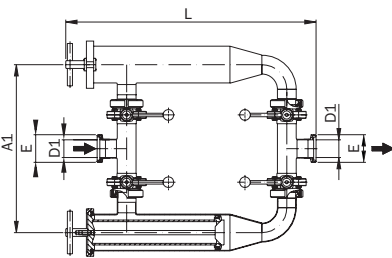
Angle Type Strainers and Accessories



Angle Type Strainer Male/Male SMS

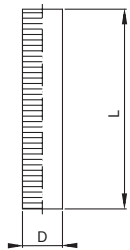
DN SMS	D1	A1	E	L	L1	L2	Weight [kg]
25	22.6	70	Rd 40 x 1/6"	547	407	52	3.3
38	35.6	70	Rd 60 x 1/6"	537	390	57	3.3
51	48.6	104	Rd 70 x 1/6"	578	407	75	5.6
63.5	60.3	104	Rd 85 x 1/6"	549	377	79	5.9
76.1	72.9	154	Rd 98 x 1/6"	756	552	104	13.5
101.6	97.6	154	Rd 132 x 1/6"	738	531	125	13.7

Angle Type Strainer Combination



DN DIN	D1	E	A1	L	L1	Weight [kg]
25	26	Rd 52 x 1/6"	350	643	558	13.4
32	32	Rd 58 x 1/6"	342	641	560	13.8
40	38	Rd 65 x 1/6"	378	646	575	16.0
50	50	Rd 78 x 1/6"	474	707	620	22.6
65	66	Rd 95 x 1/6"	464	704	630	26.8
80	81	Rd 110 x 1/4"	617	940	847	51.4
100	100	Rd 130 x 1/4"	588	930	853	56.6

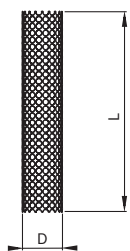
Slotted Strainer Tube



DN DIN	D	L	Free screening area (cm ²)		Weight [kg]
			0.5 mm	1 mm	
25 - 40	45	353	161	241	approx. 0.5
50 - 65	70	350	248	372	approx. 0.8
80 - 100	110	470	527	791	approx. 1.3
125 - 150	164	750	1139	1574	approx. 6.1

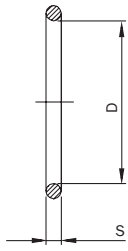
Other gap width
on request from 0.05 mm.

Perforated Strainer



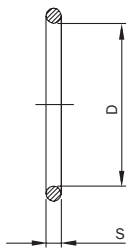
DN DIN	D	L	Free screening area (cm ²)				Weight [kg]
			1 mm	1.5 mm	2.5 mm	8 mm	
25 - 40	45	353	126.76	152.71	166.68	191.13	approx. 0.3
50 - 65	70	350	195.5	235.53	257.08	294.79	approx. 0.4
80 - 100	110	470	412.55	497.01	542.48	622.07	approx. 0.8
125 - 150	164	750		1182.38	1290.58	1479.91	approx. 2.0

Angle Type Strainers and Accessories



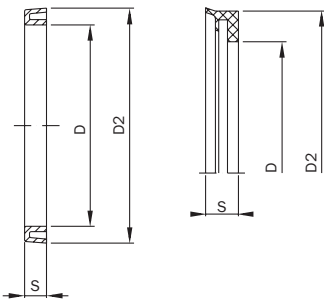
Seal Ring for Tie Rod

DN DIN	D	S	Weight [kg]
25 - 40	6	2	0.01
50 - 65	8	2	0.01
80 - 150	12	2	0.01



Seal Ring for Cap

DN DIN	D	S	Weight [kg]
25 - 40	53.34	5.33	0.020
50 - 65	86.5	5	0.030
80 - 100	see grooved ring		
125 - 150	204	7	0.036



Grooved Ring

DN DIN	D	D2	S	Weight [kg]
25 - 40	50	65	11	0.01
50 - 65	92	100	10	0.01
80 - 100	120	148	15	0.07
125 - 150	190	200	12.5	0.07

DN25 - DN65
DN125 - DN150

DN80 - DN100



REGOM INSTRUMENTS s.r.o.

Brabcova 1159 / 2

147 00 Praha 4

CZECH REPUBLIC

Tel: +420 241 402 206

Fax: +420 241 400 290

Mail: regom@regom.cz

Skype: regom-office

www.regom.cz